

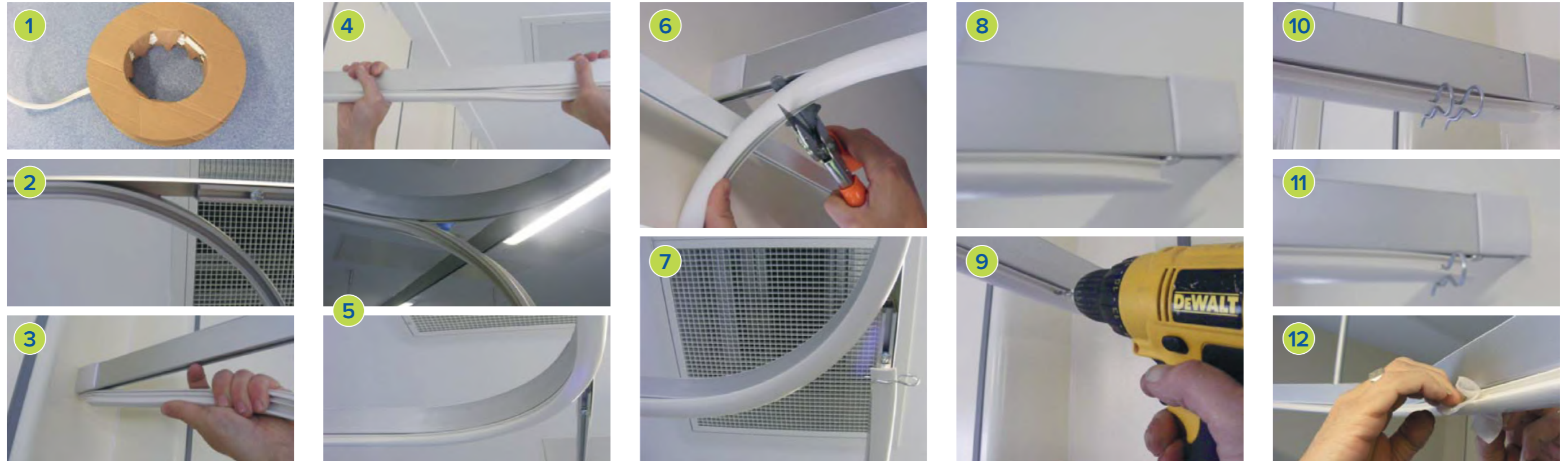


ALL MARLUX CURTAINS ARE 100% RECYCLABLE.
 Marlux offers a recycling service* to its customers (subject to conditions); which includes the collection and ethical recycling of used product.
 For more information regarding the Enviro Bag Service please contact Marlux.
 *UK only.



ADAPT-A-TRACK

DID YOU KNOW ?
 MARLUX Disposable Curtains are available for customisable printed messaging.



- 1 18m coil of Adapt-a-Track MK4 or MK5.
- 2 Remove all existing gliders and hooks from cubicle track.
- 3 Position Adapt-a-Track into one end and push in ensuring Adapt-a-Track is close to wall.
- 4 Push Adapt-a-Track into the cubicle track, ensuring that both sides of the arrow head are fully inside the channel.
- 5 Feed Adapt-a-Track around the length of cubicle track following the natural curve.
- 6 Ensure Adapt-a-Track is against the wall at one end and cut the insert to a maximum of 30mm from end of cubicle track to allow a loading point for the curtain.
- 7 Leave a gap of 40mm from end of straight cubicle track to the bend to allow the curtains to pass.
- 8 The 30mm gap allows a loading point for refitting curtains and a stop to keep the Adapt-a-Track secure.
- 9 Using a 4mm drill bit, drill 2 holes in each end of Adapt-a-Track 5mm apart.
- 10 Place 2 pins for the curtain stacking side.
- 11 Place 1 pin for the curtain loading side.
- 12 Silicone wipe the Adapt-a-Track.

MARLUX MEDICAL LTD
 Bourton Industrial Park,
 Bourton on the Water, Gloucestershire
 GL54 2HQ, United Kingdom

T: +44 (0) 1451 823 398
E: sales@marluxmedical.com
www.marluxmedical.com

